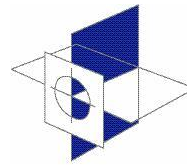


**APPROVED USED CMMs  
HALF THE PRICE OF NEW!**



**STATUS**  
Metrology

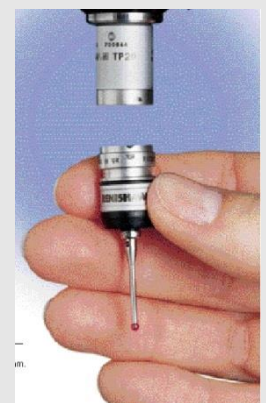
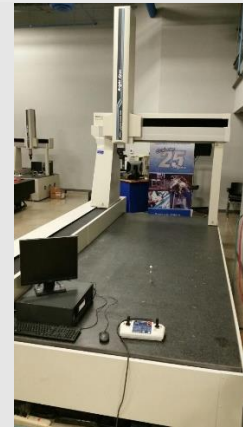
## STATUS Model Mitutoyo Euro-Apex CNC CMM

### Technical Specification:

Model	Mitutoyo Euro Apex CMM
Measuring Range	1200 x 3000 x 1000 mm
Accuracy	Vol U3 = 5 + 5L / 1000 [µm] OEM Spec
Overall Dimensions	L 4330 x W 2150 x H 3585 mm Weight: 2000Kgs Part Weight: 1115Kgs

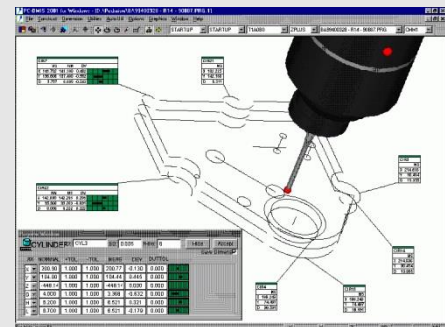
### Standard Equipment:

XYZ Guiding	Air Bearings on all axis
XYZ Scales	XYZ Digital Resolution .001mm
XYZ Controller	DCC Digital Vector Motion Control
Operator Hand-box	DEA Portable Joystick
Calibration Sphere	New 20mm with UKAS Certificate
Probe	Renishaw Automatic Indexable probe Head & Probe
PC, Printer & Desk	New latest model & 24" Flat Screen
CMM Software	
Operator Training	Additional Option



### Terms & Conditions of supply:

Transport Delivery & Installation	Inclusive Mainland UK (Europe & Ireland ~ POA)
Calibration	Inclusive CMMA certification
Warranty	12 months on all new parts 6 months on all 2nd User parts
Payment Terms	50% deposit 40% delivery 10% install



### Additional Equipment POA:

Calibration	UKAS Certification
Maintenance	Annual Service Contracts
Probes	A vast range of options available
CMM Software	CAD compatible options
Fixturing	A vast range of modular options available



**Status Metrology Solutions Ltd**  
**Measurement House Lenton Street Sandiacre Nottingham NG10 5DX**  
**Tel 0115 939 2228 Fax 0115 939 3355**  
**Email [info@statusmetrology.com](mailto:info@statusmetrology.com) [www.statusmetrology.com](http://www.statusmetrology.com)**