

**APPROVED USED CMMs
HALF THE PRICE OF NEW!**



STATUS
Metrology


STATUS Model DEA Scirocco CNC CMM

Technical Specification:

Model	Status DEA Scirocco CMM
Measuring Range	1000 x 1500 x 860 mm
Accuracy	Vol U3 = 4 + 5L/1000 [µm] OEM Spec
Overall Dimensions	L 3200 x W 1680 x H 2720 mm Weight: 2950Kgs Part Weight:3000Kgs

Standard Equipment:

XYZ Guiding	Air Bearings on all axis
XYZ Scales	XYZ Digital Resolution .001mm
XYZ Controller	DCC Digital Vector Motion Control
Operator Hand-box	DEA Portable Joystick
Calibration Sphere	New 20mm with UKAS Certificate
Probe	Renishaw Automatic Indexable probe Head & Probe
PC, Printer & Desk	New latest model & 24" Flat Screen

CMM Software 

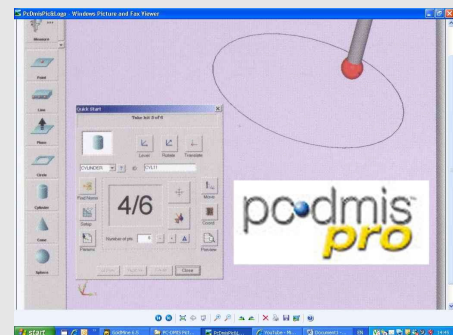
Operator Training Additional Option

Terms & Conditions of supply:

Transport Delivery & Installation	Inclusive Mainland UK (Europe & Ireland ~ POA)
Calibration	Inclusive CMMA certification
Warranty	12 months on all new parts 6 months on all 2nd User parts
Payment Terms	50% deposit 40% delivery 10% install

Additional Equipment POA:

Calibration	UKAS Certification
Maintenance	Annual Service Contracts
Probes	A vast range of options available
CMM Software	CAD compatible options
Fixturing	A vast range of modular options available



Status Metrology Solutions Ltd
Measurement House Lenton Street Sandiacre Nottingham NG10 5DX
Tel 0115 939 2228 Fax 0115 939 3355
Email info@statusmetrology.com www.statusmetrology.com