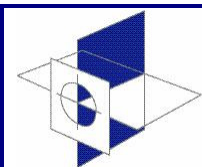


**APPROVED USED CMMs
HALF THE PRICE OF NEW!**



STATUS
Metrology

STATUS G2 AUTOMATIC CMM

Technical Specification:

Model	Status G2 CMM
Measuring Range	600 x 700 x 400 mm
Accuracy	Vol U3 = 4 + 4L / 1000 [μ m]
Overall Dimensions	L 1250 x W 1550 x H 2500 mm

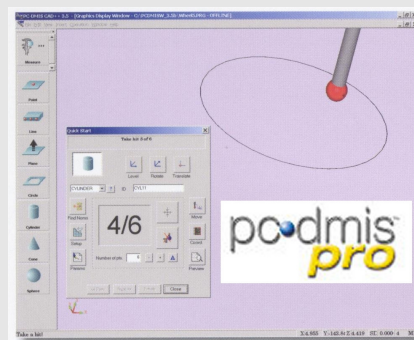
Standard Equipment:

XYZ Guiding	Air Bearings on all axis
XYZ Scales	Resolution .001mm
XYZ Controller	3D Digital Vector Motion Control
Operator Hand-box	Single Joystick Portable
Calibration Sphere	20mm with UKAS Certificate
Probe	Renishaw Automatic Probe Head Renishaw TP20 Probe
PC, Printer & Desk	New latest model Pentium 22" Flat Screen VDU
CMM Software	podmis ^{pro}
Operator Training	4 days



Terms & Conditions of supply:

Transport Delivery & Installation	Inclusive Mainland UK (Europe & Ireland POA)
Calibration	Inclusive CMMA certification
Warranty	12 months on all new parts 6 months on all 2nd User parts
Payment Terms	10% deposit 80% delivery 10% install



Additional Equipment POA:

Calibration	UKAS Certification
Maintenance	Annual Service Contracts
Probes	A vast range of options available
CMM Software	CAD compatible options
Fixturing	A vast range of modular options available



Status Metrology Solutions Ltd
Measurement House Lenton Street Sandiacre Nottingham NG10 5DX
Tel 0115 939 2228 Fax 0115 939 3355
Email info@statusmetrology.com www.statusmetrology.com