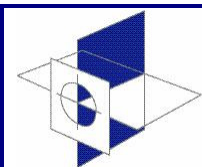


**APPROVED USED CMMs  
HALF THE PRICE OF NEW!**



**STATUS**  
Metrology

## DEA SWIFT MANUAL OPERATION CMM

### Technical Specification:

Model	DEA Swift 7-5-3 Manual CMM
Measuring Range	X 710 x Y = 510 x Z = 330 mm
Accuracy	Vol U3 = 4 + 5L / 1000 [ $\mu$ m]
Overall Dimensions	L 1335 x W 978 x H 1290 mm

### Standard Equipment:

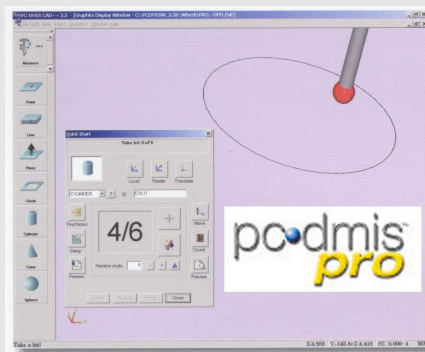
XYZ Guiding	Air Bearings on all axis
XYZ Scales	Resolution .001mm
XYZ Controller	Digital Interpolator PCIB Circuit Board
Operator Hand-box	N/a
Calibration Sphere	20mm with UKAS Certificate
Probe	Included
PC & Printer	Included
CMM Software	podmis <sup>pro</sup>
Operator Training	2 days on site at Status

### Terms & Conditions of supply:

Transport Delivery & Installation	Inclusive Mainland UK (Europe & Ireland ~ POA)
Calibration	Inclusive CMMA certification
Warranty	12 months on all new parts 6 months on all 2nd User parts
Payment Terms	30% deposit 60% delivery 10% install

### Additional Equipment POA:

Calibration	UKAS Certification
Maintenance	Annual Service Contracts
Probes	A vast range of options available
CMM Software	CAD compatible options
Fixturing	A vast range of modular options available



**Status Metrology Solutions Ltd**  
**Measurement House Lenton Street Sandiacre Nottingham NG10 5DX**  
**Tel 0115 939 2228 Fax 0115 939 3355**  
**Email [info@statusmetrology.com](mailto:info@statusmetrology.com) [www.statusmetrology.com](http://www.statusmetrology.com)**